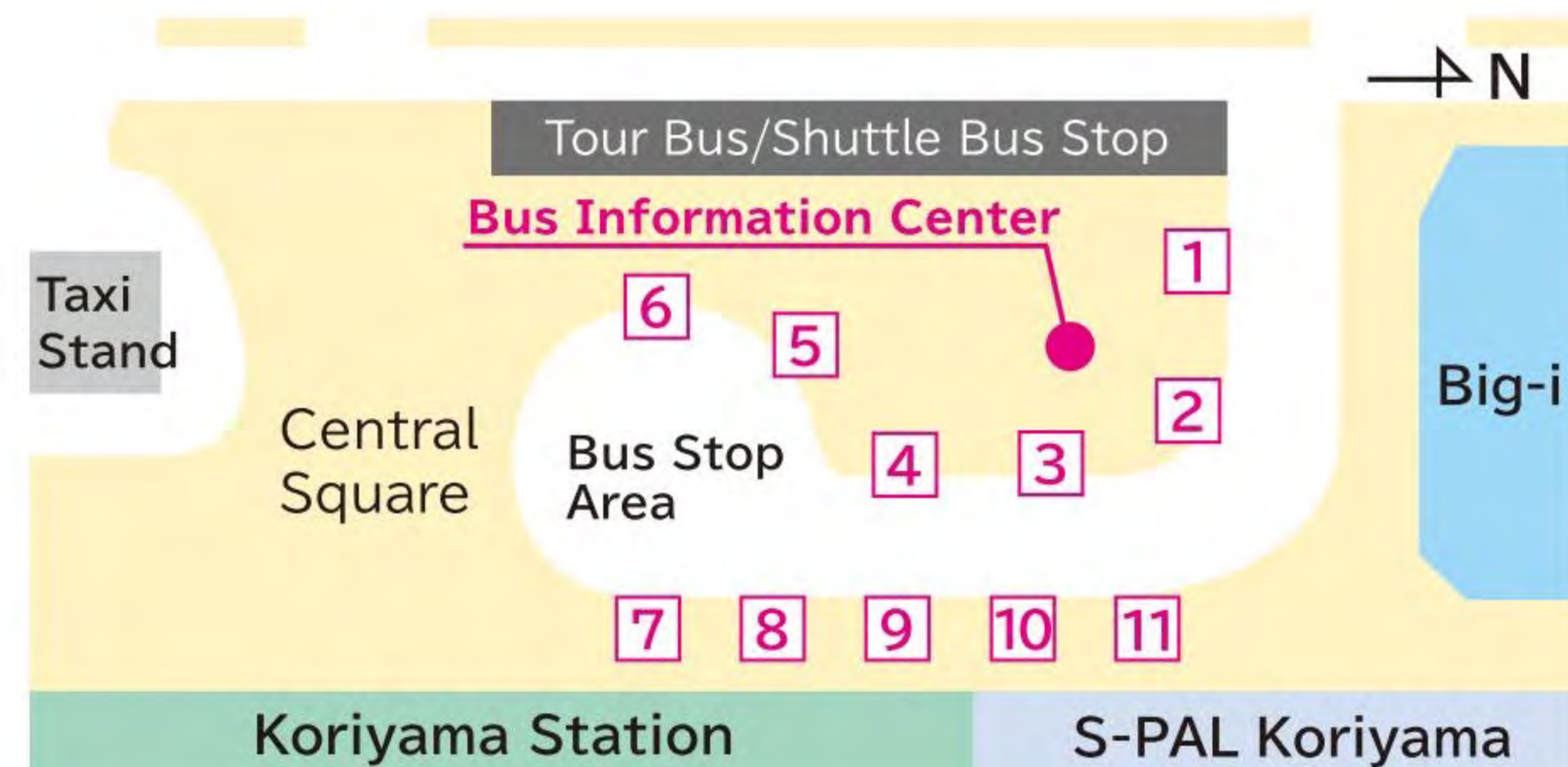


# How to Ride the Bus

## Koriyama Bus Terminal

The bus terminal is located at the West Exit of Koriyama Station, on the right-hand side. The buses are bound for different destinations, depending on which bus stop number they leave from, so make sure to confirm the route before boarding the bus.

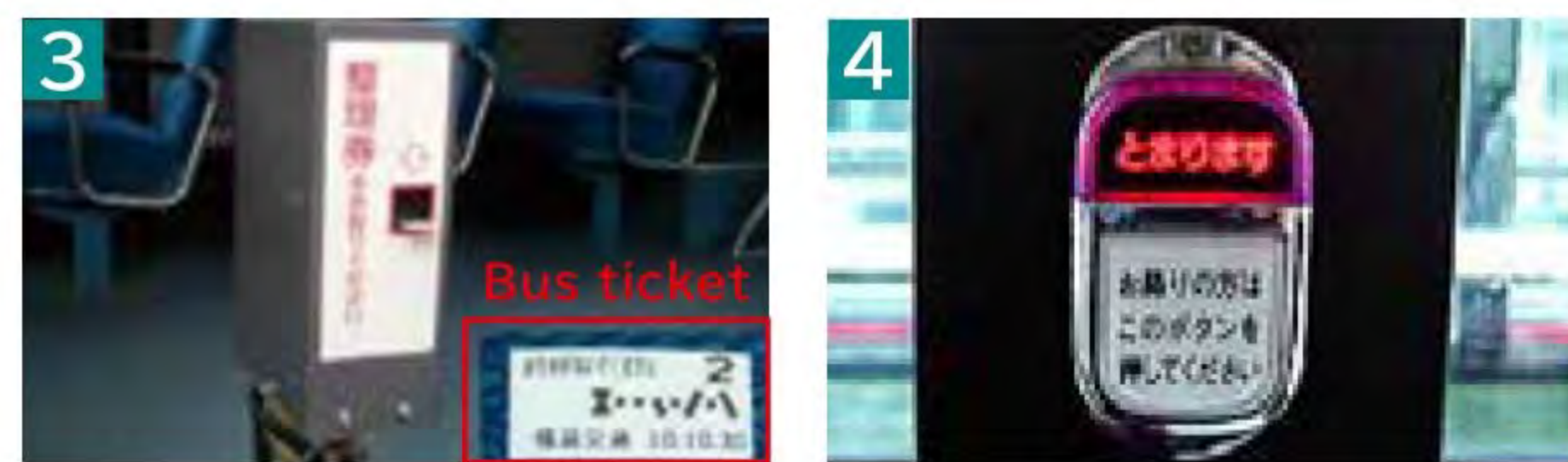


## Boarding Procedures



1 Go from Koriyama Station to the bus terminal, and wait at the bus stop number of the bus you want to use.

2 Enter the bus through the rear door.



3 Make sure to always take a bus ticket from the ticket dispenser on the right-hand side.

4 Listen to the bus announcements, and when you are approaching the bus stop where you want to get off, push the stop (とまります) button.



5 Pay at the front of the bus. Insert the ticket into the fare machine first.

6 Once you have inserted the ticket, the amount required will be displayed. Insert the fare and exit the bus through the front door.

## Cautionary Notes about Riding the Bus

- When paying, the fare machine will not give change. Be careful not to overpay.
- If you need to make change, use the change machine attached to the fare machine.
- The change machine cannot make change for ¥2,000 yen, ¥5,000 yen, or ¥10,000 bills.

# Welcome to Koriyama!

Koriyama City is located in the center of Fukushima Prefecture.

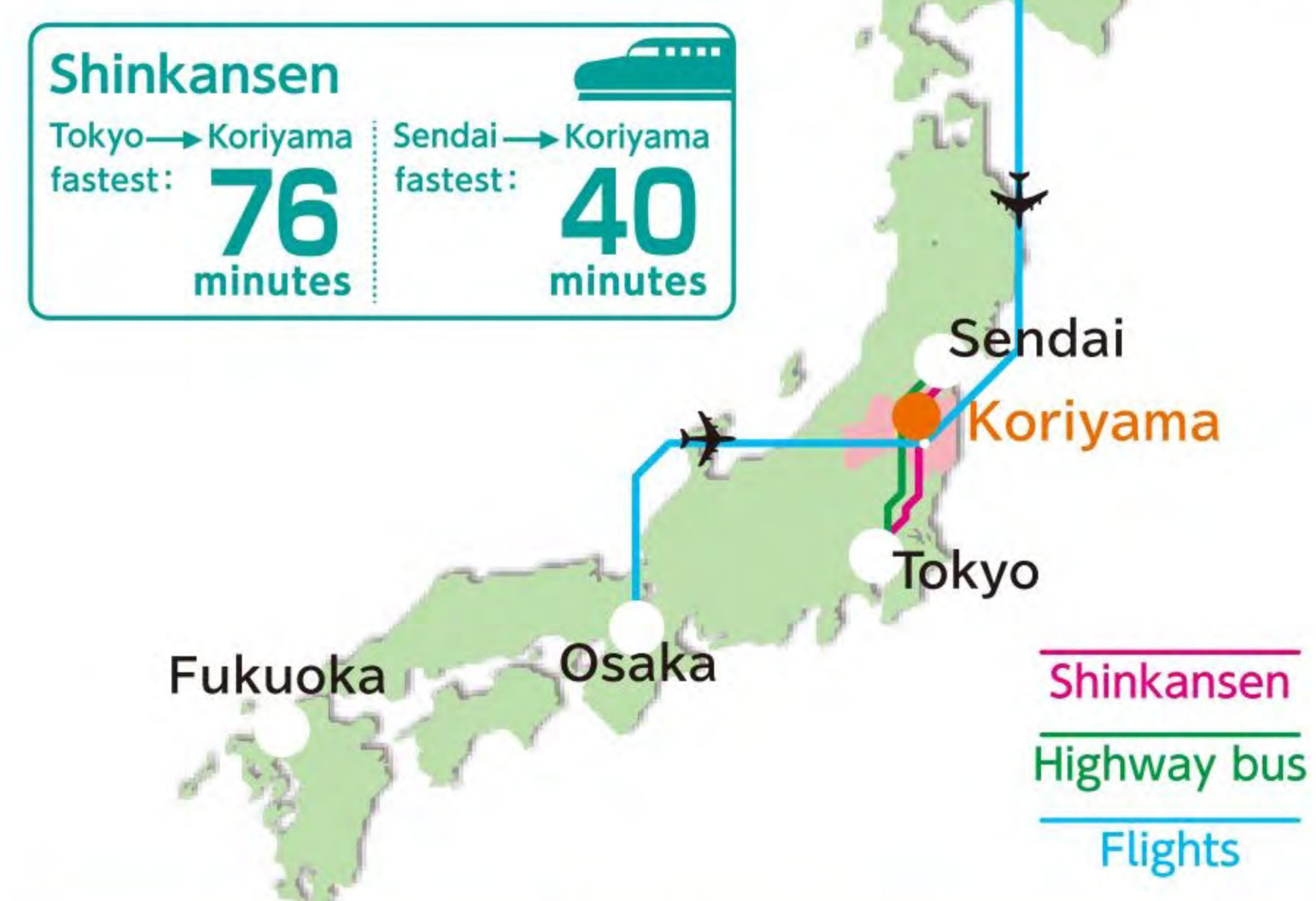
By bullet train, it's about 90 minutes from Tokyo and about 1 hour from Sendai, making Koriyama City easily accessible and easy to visit. Of course, you can find delicious food in Koriyama, but it also has many hot springs, as well as historical shrines and temples, and is full of charm.

Come and experience the many charms of Koriyama!



## Access from Other Prefectures

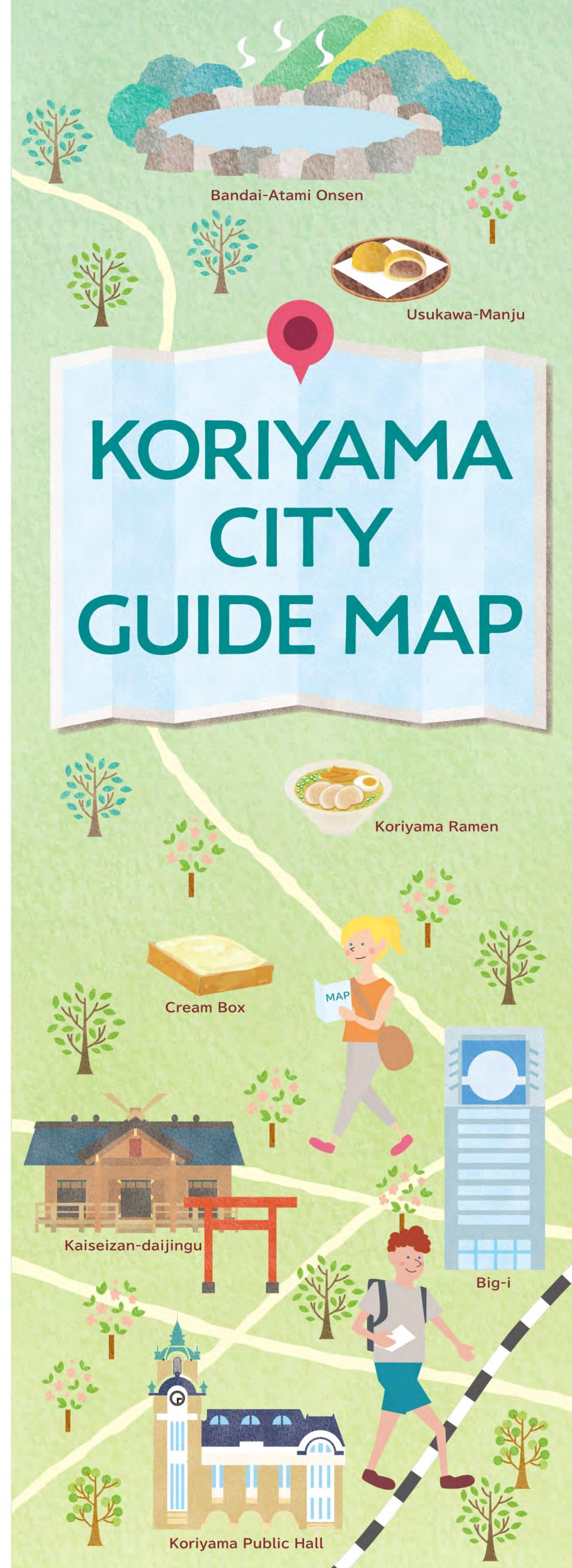
Easy access from both Tokyo and Sendai is part of Koriyama's appeal!



**Shinkansen**  
 ●Tokyo → Koriyama - 46 trips per day (fastest: 76 minutes)  
 ●Sendai → Koriyama - 41 trips per day (fastest: 40 minutes)

**Flights**  
 ●Itami → Fukushima 4 trips per day (approximately 65 minutes)  
 ●Sapporo → Fukushima 1 trip per day (approximately 75 minutes)

**Highway bus**  
 ●Sendai - approximately 2 hours  
 ●Shinjuku - approximately 4 hours



## Cycle Rental Within Koriyama



**Mazedesse Plaza**  
 TEL: 024-925-7745

Perfect for exploring around JR Koriyama Station! Ride a bicycle and check out the city's sightseeing spots.

Rental JPY 600/2hours JPY 1,200/5hours  
 charge JPY 2,000/1day  
 Opening hours: 10:00-18:00 Closed: Tuesdays

## Koriyama City Tourist Information Center



Please use this center when sightseeing in Koriyama! We will inform you about famous places, souvenirs, and specialty products.

Koriyama city tourist Association



Official site



Instagram



Facebook

## Koriyama Wi-Fi Information

### Japan Wi-fi auto-connect

Once you have registered, you can use Wi-Fi spots without the need to log in each time! You can easily access the internet anytime, anywhere across Japan! For more information on how to use Koriyama's Wi-Fi, follow the link below, or check the official website.

<https://www.ntt-bp.net/jw-auto/ja/index.html>

### How to Use

1 Download the dedicated app and register as a user

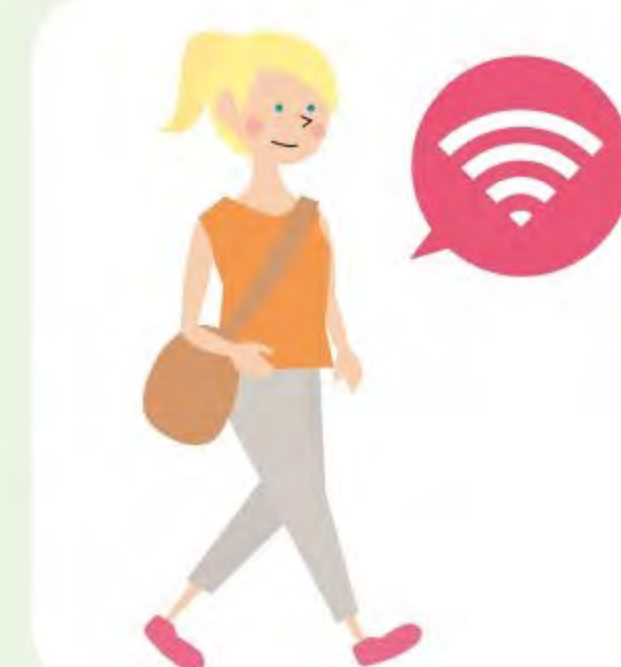
iPhone users scan here



Android users scan here



2 Head to a Wi-Fi spot, and connect to the Internet



Connect!!





# Koriyama Places of Interest



## Planetarium

Enjoy the planetarium, where you can see dramatic images on the largest dome screen space theater in the Tohoku Region. Other popular attractions include experiencing gravity as it would be on the surface of the Moon and training for a space mission in The Exhibition Zone, on the 21st floor.

### Time required

It's about a 2-minute walk from JR Koriyama Station.



## Takayashiki Inari Shrine

With about 100 red torii gates lined up, this shrine is popular on Instagram. Before the war, there were about 4000 torii gates, extending to Mogi Station. The view from the top of the stone steps is stunningly beautiful.

### Time required

It's about 15 minutes from Koriyama Station by car. Or, ride the JR Ban-etsu East Line from Koriyama Station, get off at Mogi Station, and it's about a 20-minute walk from there.



## Aizu-Wakamatsu Castle

Aizu-Wakamatsu is known as the "Samurai City." The castle was destroyed in 1874, but was rebuilt in 1965. You can go inside the castle.

### Time required

Ride the JR Ban-etsu West Line from Koriyama Station, and get off at Aizu-Wakamatsu Station (about 60 minutes).



## Takashiba Deko Yashiki

For the past 300 years, since the Edo Period, Hariko dolls made from Japanese paper, as well as Miharugoma, used as lucky charms, have been made in the Takashiba Area. The craft-making village is called Deko Yashiki; the "Deko" part of the name means "doll". To this day 4 craft-making houses carry on the tradition of crafting the Hariko dolls and Miharugoma.

### Time required

Ride the JR Ban-etsu East Line from Koriyama Station, get off at Miharu Station, and it's about 10 minutes from there by car.



## Koriyama Nunobiki Wind Farm

From the top of a plateau, at a height of about 1000 meters, there is a stunning view of Mount Bandai and Lake Inawashiro. It features the largest wind turbines in Japan lined up above, and the beauty of the flower garden spread on the ground below.

### Time required

It's about 60 minutes from Koriyama Station by car.



## Ouchi-Juku (Shimogo Town)

During the Edo Period, Ouchi-Juku prospered as a vital post town on the road from Aizu to Nikko. With the rows of thatched roof cottages, you'll feel as if you have traveled back in time to the Edo Period.

### Time required

Ride the JR Ban-etsu West Line from Koriyama Station, get off at Aizu-Wakamatsu Station, and change to the Aizu Railway. Get off at Yunokami-Onsen Station, and it's about 10 minutes from there by car.



## Ryokusuien

At Ryokusuien, you can enjoy a variety of flowers and gardens throughout the year. What's more, if you make a reservation in advance, you can have a barbecue or imoni party. Why not take a stroll while experiencing the four seasons of Japan?

### Time required

Ride the JR Ban-etsu West Line from Koriyama Station, get off at Kikuta Station, and it's about 10 minutes from Kikuta Station by car.



## Lake Inawashiro

Said to be a mirror that reflects the heavens, Lake Inawashiro holds a special place in the hearts of the people of Koriyama. With a stunning beauty that is present throughout all four seasons, the lake is used for a wide array of purposes, including Koriyama's agriculture and daily activities.

### Time required

Ride the JR Ban-etsu West Line from Koriyama Station, get off at Inawashiro Station, from which it's about a 15-minute bus ride.



## Japanese Sake

The fact that the Japanese sake of Fukushima Prefecture has been ranked number one in Japan for long term in a row, and is highly rated nationwide and abroad, is a huge source of pride. Huge amounts of the best sake Japan has to offer are produced here!

## Hot Spring of Beautiful Skin Bandai-Atami Hot Spring



About 800 years ago, a woman named Hagihime became deathly ill with an incurable disease. According to legend, a god named Fudo Myo-Oh told her of the location of a hot spring that could cure illnesses; when she entered the hot spring, her disease was cured, and she became a beautiful princess.

Bandai-Atami Hot Spring is the hot spring from this legend, which is why it is known as the "Hot Spring of Beauty."

One of the main draws of Bandai-Atami is its smooth hot water. There is overnight lodging, as well as ample day spas and footbaths. What's more, it offers plenty of delicious food, souvenirs, and nearby sightseeing spots, making for a full day of fun!

Spring Quality: alkaline simple hot spring.  
Effective on: cuts, burns, back pain, nerve pain, poor circulation, fatigue, and more.

Hagihime mascot character, *Hagihime-chan*



## Footbath spot



The footbath in front of Bandai-Atami Station is open for anyone to use. The 300-year-old towering trees of Keyaki-No-Mori, as well as Omine-Fudo Falls, are also nearby, so you experience nature while you relax.



For more details...  
Please see the Bandai-Atami Hot Spring Tourism Association website!

Access via the QR code on the right!







# Koriyama MAP

- Legend**
- Shopping Center
  - Public Facility
  - Convenience Store
  - Buddhist Temple
  - Car Rental Agency
  - Bank
  - Hotel
  - Post Office
  - Hospital
  - Koban (Police Box)
  - Public Restroom

**C2 Koriyama Station Souvenir Shop**  
 Located on the first floor of Koriyama Station, this souvenir shop sells local Koriyama sweets, alcohol, and various other distinctive products.  
 It is located on the first floor of JR Koriyama Station.

**B3 Asakakunituko Shrine**  
 This is one of the oldest shrines in Koriyama City. Also called Yahata-sama, it is well-known by many people. There is also a memorial dedicated to the spirit of Tenmangu and to Gonsai Asaka, a scientist from the Edo period.  
 It's about a 10 minute walk from JR Koriyama Station.

**A2 Hayama Park**  
 Hayama Falls, a waterfall formed from the water flowing from Asaka Canal, can be found in this park. It's a popular place for local people to relax.  
 Take the Line 11 Bus bound for Hayama, and get off after about 5 minutes at the Saibansho-Mae bus stop.

**A2 21st Century Memorial Park, Hayama no Mori**  
 This park is home to the Tongari Fureai Building, where you can experience gardening classes, as well as the Hayama-Sou cafe, where you can enjoy Japanese cultural practices such as tea ceremonies and flower arrangement ceremonies.  
 Take the Line 11 Bus bound for Hayama, and get off after about 5 minutes at the Hayama-Itchome bus stop.

**A2 Koriyama Public Hall of Koriyama City**  
 This building, typical of the Taisho period, has a retro clock tower. It is used for a variety of purposes, such as hosting events and concerts.  
 Take the Line 11 Bus bound for Ikenodai, and get off after about 15 minutes at the Koriyama Library (Koriyama Toshokan) bus stop.

## Restaurants with foreign language services

- Ikkon**  
 Category: Japanese Food  
 Conversation: Japanese only  
 Menu of foreign language: en,ko,zh-CN,zh-TW
- Uosin**  
 Category: Japanese Food  
 Conversation: OK(en)  
 Menu of foreign language: No
- Koori ekinakaten**  
 Category: Japanese Food  
 Conversation: Japanese only  
 Menu of foreign language: en,ko,zh-CN,zh-TW
- Mei uei sanchin**  
 Category: Chinese food  
 Conversation: Japanese only  
 Menu of foreign language: en,ko,zh-CN,zh-TW
- Koori ekimaeten**  
 Category: Japanese Food  
 Conversation: Japanese only  
 Menu of foreign language: en,ko,zh-CN,zh-TW
- Sanmatsukaikan**  
 Category: Japanese Food & Chinese Food and more  
 Conversation: a little(en)  
 Menu of foreign language: en,ko,zh-CN,zh-TW
- Izakaya Shinoya**  
 Category: Izakaya  
 Conversation: Japanese only  
 Menu of foreign language: en,ko,zh-CN,zh-TW
- Tsuruga**  
 Category: Japanese Food  
 Conversation: Japanese only  
 Menu of foreign language: en,ko,zh-CN,zh-TW
- Harumachido**  
 Category: Japanese Food  
 Conversation: Japanese only  
 Menu of foreign language: en,ko,zh-CN,zh-TW
- Horumonyaki Fukuchan honten**  
 Category: Yakimiku  
 Conversation: Japanese only  
 Menu of foreign language: en,ko,zh-CN,zh-TW
- Horumonyaki Fukuchan akedoten**  
 Category: Yakimiku  
 Conversation: Japanese only  
 Menu of foreign language: en,ko,zh-CN,zh-TW
- Morisshu**  
 Category: Japanese Food  
 Conversation: Japanese only  
 Menu of foreign language: en,ko,zh-CN,zh-TW
- Yasubei**  
 Category: Izakaya  
 Conversation: a little(en)  
 Menu of foreign language: en
- Yumeichizen**  
 Category: Japanese Food  
 Conversation: OK(en)  
 Menu of foreign language: en,ko,zh-CN,zh-TW
- Komachi**  
 Category: Japanese Food  
 Conversation: OK(en)  
 Menu of foreign language: en,ko,zh-CN,zh-TW
- Itamaeryori Zen**  
 Category: Japanese Food  
 Conversation: Japanese only  
 Menu of foreign language: en,ko,zh-CN,zh-TW
- Sugoroku**  
 Category: Japanese Food  
 Conversation: OK(en, vi, si)  
 Menu of foreign language: en,ko,zh-CN,zh-TW
- Entei San**  
 Category: Japanese Food  
 Conversation: OK(en, vi, si)  
 Menu of foreign language: en,ko,zh-CN,zh-TW
- Asian Bamboo**  
 Category: Asian food  
 Conversation: OK(en, vi, si)  
 Menu of foreign language: en,ko,zh-CN,zh-TW
- Kadoichi**  
 Category: Izakaya  
 Conversation: Japanese only  
 Menu of foreign language: en,ko,zh-CN,zh-TW
- Robata banzai**  
 Category: Izakaya  
 Conversation: Japanese only  
 Menu of foreign language: en,ko,zh-CN,zh-TW
- Tenkuu**  
 Category: tempura  
 Conversation: OK(en)  
 Menu of foreign language: en,ko,zh-CN,zh-TW
- Yomoyama**  
 Category: Izakaya  
 Conversation: Japanese only  
 Menu of foreign language: en,ko,zh-CN,zh-TW
- Kappou Yuri**  
 Category: Japanese Food  
 Conversation: Japanese only  
 Menu of foreign language: en,ko,zh-CN,zh-TW
- Hinaiya sasuke**  
 Category: Japanese Food  
 Conversation: Japanese only  
 Menu of foreign language: en,ko,zh-CN,zh-TW
- Furutsuresutoran Aika**  
 Category: Fruit restaurant  
 Conversation: Japanese only  
 Menu of foreign language: en,ko,zh-CN,zh-TW
- Daininguresutoran Ete**  
 Category: western food  
 Conversation: OK(en)  
 Menu of foreign language: en,ko,zh-CN,zh-TW
- PETIT GREEN**  
 Category: western food  
 Conversation: OK(en, fr)  
 Menu of foreign language: en
- Chinman**  
 Category: Chinese food  
 Conversation: Japanese only  
 Menu of foreign language: en,ko,zh-CN,zh-TW
- Matsukizushi**  
 Category: Sushi  
 Conversation: OK(en, others)  
 Menu of foreign language: en,ko,zh-CN,zh-TW
- Shingetsu**  
 Category: Sushi  
 Conversation: Japanese only  
 Menu of foreign language: en,ko,zh-CN,zh-TW
- Mixology Mosaïque**  
 Category: Bar&Café  
 Conversation: Japanese only  
 Menu of foreign language: en,ko,zh-CN,zh-TW
- Madan**  
 Category: Korean food  
 Conversation: OK(en, ko)  
 Menu of foreign language: No
- Izakaya Kagetsu**  
 Category: Izakaya  
 Conversation: Japanese only  
 Menu of foreign language: en,ko,zh-CN,zh-TW
- Omiyagekan**  
 Category: Souvenir shop(food)  
 Conversation: Japanese only  
 Menu of foreign language: No
- Wakuya**  
 Category: Souvenir shop(Folk crafts)  
 Conversation: Japanese only  
 Menu of foreign language: No
- torōru**  
 Restaurant in Hotel Hamatsu 1F  
 Category: Coffee House  
 Conversation: OK(en)  
 Menu of foreign language: en
- Hama**  
 Restaurant in Hotel Hamatsu 9F  
 Category: Steak House  
 Conversation: OK(en)  
 Menu of foreign language: en
- Casual dining Spoon**  
 Restaurant in Koriyama Viewhotel ANNEX 1F  
 Category: western food  
 Conversation: OK(en)  
 Menu of foreign language: en
- Funatsu**  
 Restaurant in Koriyama Viewhotel ANNEX 6F  
 Category: Japanese Food  
 Conversation: OK(en)  
 Menu of foreign language: en
- Karakurenai**  
 Restaurant in Koriyama Viewhotel 3F  
 Category: Chinese food  
 Conversation: OK(en)  
 Menu of foreign language: en

## Hotels

- |  |  |   |  |   |
|--|--|---|--|---|
| <b>1 Daiwa Roynet Hotel</b><br>TEL:024-927-4855  | <b>4 Chisun Hotel Koriyama</b><br>TEL:024-923-6711     | <b>7 Hotel Crown Hills Koriyama</b><br>TEL:024-925-4411 | <b>10 Toyoko Inn Koriyama</b><br>TEL:024-935-1045        | <b>13 Hotel Hamatsu</b><br>TEL:024-935-1111                   |
| <b>2 Koriyama City Hotel</b><br>TEL:024-922-1111 | <b>5 Hotel Global View</b><br>TEL:024-932-3232         | <b>8 Koriyama Washington Hotel</b><br>TEL:024-923-1311  | <b>11 Hotel LiveMax</b><br>TEL:024-935-2180              | <b>Other Hotels</b><br><b>Smile Hotel</b><br>TEL:024-943-6851 |
| <b>3 APA Hotel</b><br>TEL:024-923-9111           | <b>6 Koriyama View Hotel Annex</b><br>TEL:024-939-1111 | <b>9 Koriyama View Hotel</b><br>TEL:024-924-1111        | <b>12 Dormy Inn Express Koriyama</b><br>TEL:024-935-5489 |   |